

## ASHLEIGH SCHUMAN

### Spotlight ID

[8217-1275-7991](tel:8217-1275-7991)

### Email

[Ashleigh.Schuman@cssd.ac.uk](mailto:Ashleigh.Schuman@cssd.ac.uk)

### Contact

Industry Liaison Manager,  
[Industry.Liaison@cssd.ac.uk](mailto:Industry.Liaison@cssd.ac.uk)

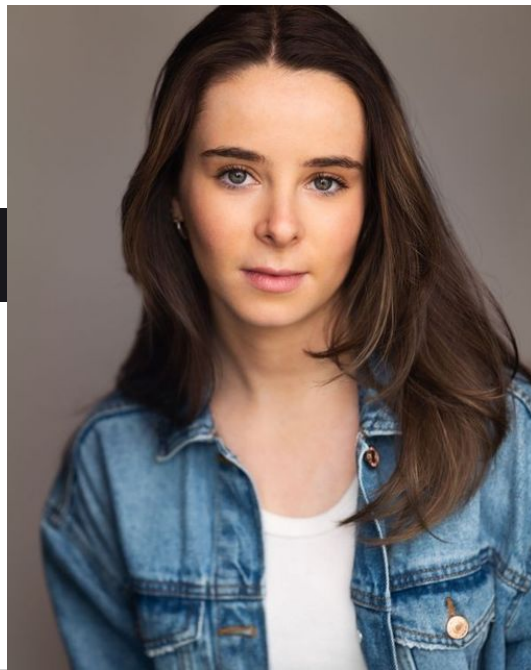
### Personal Details

Height: 5'3

Eyes: Green

Hair: Brunette

Voice: Mezzo-Soprano



### TRAINING

- 2023 - 2024 The Royal Central School of Speech and Drama - MA Music Theatre  
2019 - 2022 University of Birmingham - BA Philosophy  
2021 - 2021 The Royal Central School of Speech and Drama - Audition Techniques  
2020 - 2020 Mountview - Audition Technique- Acting Through Song

### PRODUCTIONS AT CENTRAL

- 2023 Young Sally - *Follies* (Julia Locascio)  
2023 Chip's Sister - *Weeverfish* (Andrew Whyment)

### EXPERIENCE

#### Theatre

- 2022 Ensemble - *Ragtime* - National Youth Music Theatre (NYMT) - The MCT at Alleyn's (Hannah Chissick)  
2021 Shana Grice - *Cabaret Macabre* - British Youth Music Theatre (BYMT) - Bridewell Theatre (Jessica Walker)  
2021 Advanced Dancer - *Make Them Hear You (showcase)* - GMTG (Guild Musical Theatre Society) - University of Birmingham

### ACCENTS

RP (Native), Heightened RP, General American, Southern American, Irish, Good ear for accents

### SKILLS

Diploma in Musical Theatre Singing (LCM), Basic Piano, Jazz, Ballet, Tap, Devising, Full UK Driving Licence

**LANGUAGES**

---

English (Native)